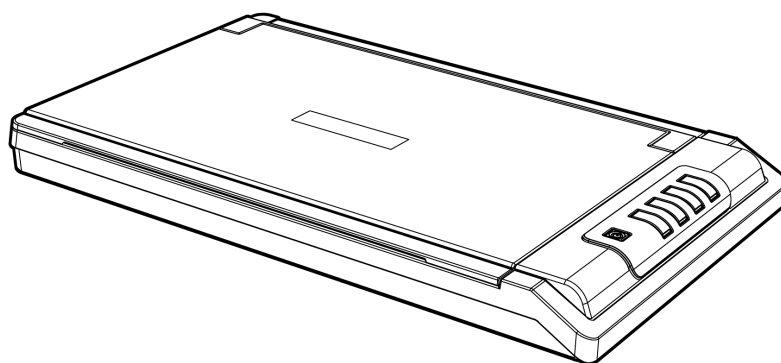




Scanner User's Guide

OpticSlim



Trademarks

© 2024 Plustek Inc. All rights are reserved. No portion of this document may be reproduced without permission.

All trademarks and brand names mentioned in this publication are property of their respective owners.

Liability

While all efforts have been made to ensure the accuracy of all contents in this manual, we assume no liability for errors or omissions or by statements of any kind in this manual, whether such errors are omissions or statements resulting from negligence, accidents, or any other cause. The contents of this manual are subject to change without notice. We will not shoulder any legal liability, if users failed to follow the operation instructions in this manual.

Copyright

The scanning of certain documents, for example checks, bank notes, I.D. cards, government bonds, or public documents, may be prohibited by law and/or subject to criminal prosecution. We recommend you to be responsible and respectful of the copyrights laws when you are scanning books, magazines, journals and other materials.

Environmental Information

Recycle or disposal at end-of-life information, please ask local distributors or suppliers for recycle and disposal information. The product is designed and produced to achieve sustainable environmental improvement. We strive to produce products in compliance with global environmental standards. Please consult your local authorities for proper disposal.

The product packaging is recyclable.

Attention for recycling (For EU country only)

Protect your environment! This product should not be thrown into the household waste container. Please give it to the free collecting center in your community.

Table of Contents

INTRODUCTION	1
How to Use This Guide	1
Conventions of This Guide	1
<i>A Note about Icons</i>	2
Safety Precautions	2
Minimum System Requirements	3
Box Contents	4
Scanner Overview	5
CHAPTER I. INSTALLING THE SCANNER.....	7
Software Installation Requirements	7
Hardware Requirements	7
Installing and Setting up the Scanner	8
<i>Step 1. Connecting the Scanner to Your Computer</i>	8
<i>Step 2. Installing the Software</i>	9
<i>Step 3. Testing the Scanner</i>	10
Installing Additional Software	11
CHAPTER II. SCANNING	12
Preparing Documents	12
<i>Checking Document Conditions</i>	12
Placing Documents	13
<i>Using the Flatbed</i>	13
Scanning Documents	13
<i>Scanning via TWAIN Interface</i>	14
<i>Scanning via Image Express Interface</i>	15
<i>Scanning from the Scanner's Panel</i>	17
CHAPTER III. CARE AND MAINTENANCE	20
Cleaning the Scanner	20
<i>Cleaning Materials</i>	20
<i>Cleaning the Flatbed</i>	21
Calibrating the Scanner	21
Aligning the Scanner	22
Standby Mode	23
APPENDIX A: SPECIFICATIONS.....	24
APPENDIX B: CUSTOMER SERVICE AND WARRANTY.....	25
Service & Support Information (For EU country only)	25
Statement of Limited Warranty	26
FCC Radio Frequency Statement.....	27

INTRODUCTION

Thank you for choosing us as your scanner supplier. Your new scanner will improve the professionalism of your day-to-day computing tasks by allowing you to input images and electronic text into your computer system.

Like all of our products, your new scanner is thoroughly tested and backed by our reputation for unsurpassed dependability and customer satisfaction. We hope you will continue to turn to us for additional quality products as your computing needs and interests grow.

HOW TO USE THIS GUIDE

This User's Guide provides instructions and illustrations on how to install and operate your scanner. This guide assumes the user is familiar with Microsoft Windows / macOS. If this is not the case, we suggest you learn more about Microsoft Windows / macOS by referring to your Microsoft Windows / macOS manual before using your scanner.

The Introduction section of this manual describes the box contents and minimum computer requirements to use this scanner. Before you start installing your scanner, check the box contents to make sure all parts are included. If any items are damaged or missing, please contact the vendor where you purchased your scanner or our customer service directly.

Chapter I describes how to install the scanner's software and connect the scanner to your computer. Note: The scanner connects to your computer through the Universal Serial Bus (USB). If your computer does not support USB technology, you will need to purchase a USB interface card to add USB capabilities to your computer, or buy and install USB connectors if your motherboard has USB capabilities. This guide assumes that your computer is USB-ready and has a free USB port.

Chapter II describes how to use your scanner.

Chapter III describes how to maintain and clean your scanner.

Appendix A contains the specifications of the scanner you purchased.

Appendix B contains our customer service, the limited warranty agreement and FCC statement concerning the product.

CONVENTIONS OF THIS GUIDE

Bold —Represents commands or contents on your computer screen.

ALL CAPS —Important note or first use of an important term in a chapter.

Italic —Represents buttons on your scanner OR important notes.

A Note about Icons

This guide uses the following icons to point out information that deserves special attention.



Warning

A procedure that must be followed carefully to prevent injury, or accidents.



Attention

Instructions that are important to remember and may prevent mistakes.



Information

Optional tips for your reference.

SAFETY PRECAUTIONS



Warning

Before using this device, please read the following important information to eliminate or reduce any possibility of causing damage and personal injury.

1. Usage, the product is for indoor use in dry locations. Moisture condensation may occur inside this device and cause malfunction at these conditions:
 - when this device is moved directly from a cold to a warm location;
 - after a cold room is heated;
 - when this device is placed in a damp room.

To avoid the moisture condensation, you are recommended to follow the procedure:

- i. Seal this device in a plastic bag for it to adapt to room conditions.
 - ii. Wait for 1-2 hours before removing this device from the bag.
2. Do use the AC adapter, power cable and USB cable provided with the scanner. Use of other AC adapter and cables may lead to malfunction.
 3. Keep the space around the AC adapter and power cable clear in case you need to quickly unplug the AC adapter during emergencies.
 4. Damaged wire could cause fire or electrical shock. Keep the power cord straight and without being twisted, bended, or scraped.
 5. Unplug this device if you don't need to use it for a certain period of time, such as, during night or long weekend, to avoid any risks of causing fire.

6. Do not attempt to disassemble the scanner. There is danger of an electrical shock and opening your scanner will void your warranty.
7. Be sure not to bump or knock the scanner glass as it is fragile and could break.
8. Do not subject the scanner to excessive vibration. It may damage the internal components.

MINIMUM SYSTEM REQUIREMENTS¹

- 2.0 GHz CPU with dual-core processor minimum (Recommended: 2.8 GHz Intel® Core™ i5 Processor with 4 CPU Cores or better)
- 4 GB RAM minimum (Recommended: 8 GB or more)
- 2 GB of hard-disk space for program installation
- Display dimensions of 1024x768 or greater
- Operating System: Windows 8 / 10 / 11 & macOS 10.15.x/ 11.x/ 12.x/ 13.x/ 14.x

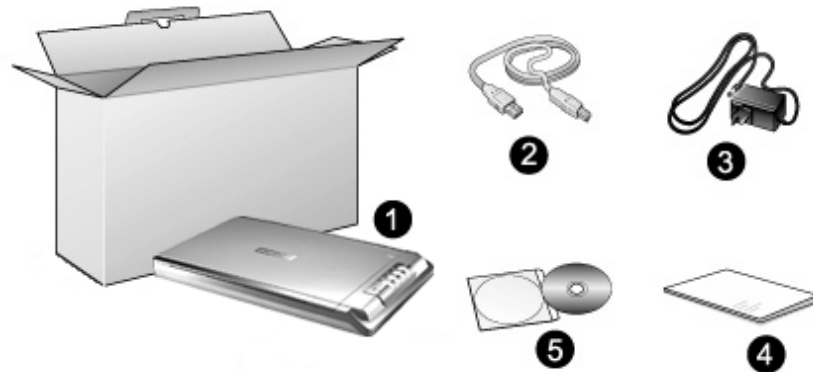


Information

Systems with 8 GB RAM and 3 GB free hard disk space are recommended for optimal performance.

¹ Higher requirements might be needed when scanning or editing a large quantity of image data. The system requirements here are only a guideline, as in general the better the computer (motherboard, processor, hard disk, RAM, video graphic card), the better the results.

Box Contents²



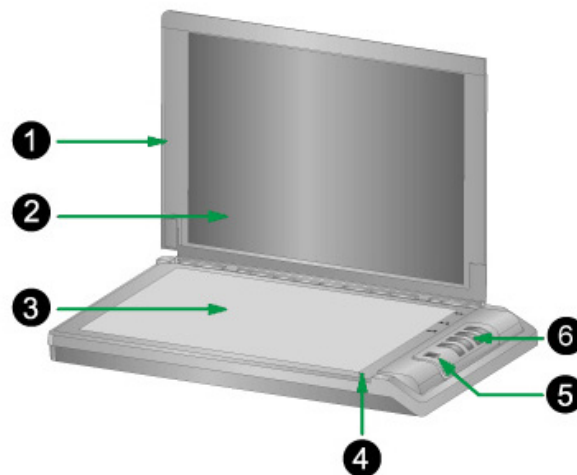
1. Scanner³
2. USB Cable
3. AC Adapter
4. Quick Guide
5. Setup/Application DVD-ROM (Option)

* The Setup/Application DVD-ROM is not included in all scanner models.

² Save the box and packing materials in case you need to transport this scanner in the future.

³ The scanner illustration(s) in this manual may appear different than from the actual scanner itself.

SCANNER OVERVIEW



1. DOCUMENT COVER— Helps keep the paper in place and protects the scanner glass.
2. DOCUMENT PAD— Keeps the paper in place and improves accuracy of image quality.
3. SCANNER GLASS— Where you put items for flatbed scanning.
4. REFERENCE MARK— Align your paper with this reference mark for flatbed scanning.
5. POWER BUTTON— Use this to turn the scanner ON or OFF.

POWER LED— Indicates the scanner status.

Light	Status
Blue	The scanner is turned on, ready to scan images.
Orange	The scanner is in standby mode. Simply press any scanner button on the scanner panel and the scanner will return back to the normal status.
Off	The scanner is off, either because the power is not turned on, or because the power cord is not properly plugged into an AC power outlet.

6. SCANNER BUTTONS—You may press any button to perform a predefined scanning task.



7. **POWER RECEPTOR**— Connects the scanner to a standard AC power outlet by the AC adapter included.
8. **USB PORT**— Connects the scanner to a USB port on your computer by the USB cable included.

CHAPTER I. INSTALLING THE SCANNER

Before installing your scanner, please verify that you have all of the proper components. A list of the package contents is provided in the “Box Contents” section of this guide.

SOFTWARE INSTALLATION REQUIREMENTS

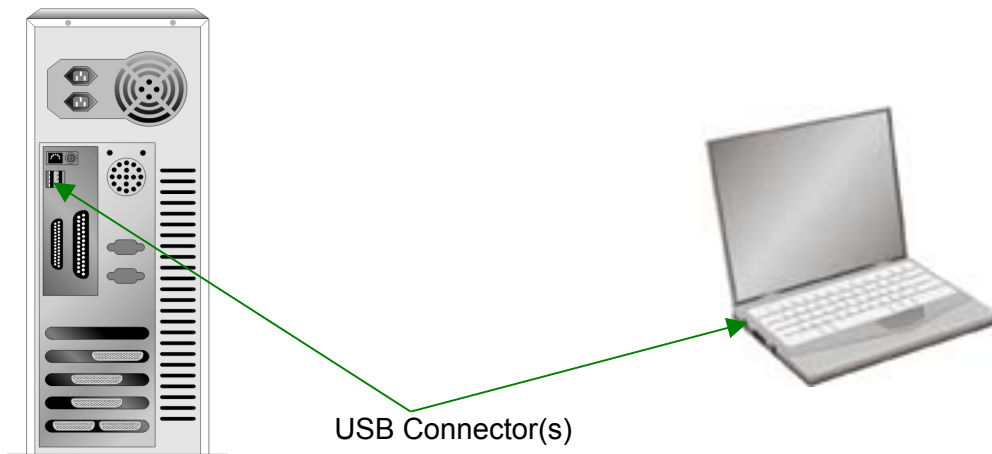
Your scanner comes with the scanner’s driver and the task management software (Plustek Image Express). All of these software applications use approximately 800 megabytes of hard disk space after they are installed into your computer. To ensure ample room for the installation, as well as for scanning and saving images, a minimum of 2 GB of hard disk space is recommended.

The USB scanner can only operate under the Microsoft Windows 8 / 10 / 11 & macOS 10.15.x/ 11.x/ 12.x/ 13.x/ 14.x operating system.

HARDWARE REQUIREMENTS

This scanner connects to your computer through the Universal Serial Bus (USB) which supports HOT PLUG AND PLAY. To determine whether your computer is USB-capable, you must check the rear of your PC to locate a USB jack that looks like the picture below. If you are having trouble in locating the USB port on your computer, please refer to the hardware manual that came with your computer.

Upon examination, you should find one or two rectangular USB ports, which usually appear as shown below.



If you don’t find such USB ports on your computer, then you need to purchase a certified USB interface card to add USB capabilities to your computer.

INSTALLING AND SETTING UP THE SCANNER

Please follow the step-by-step procedures described below to install the Plustek scanner.

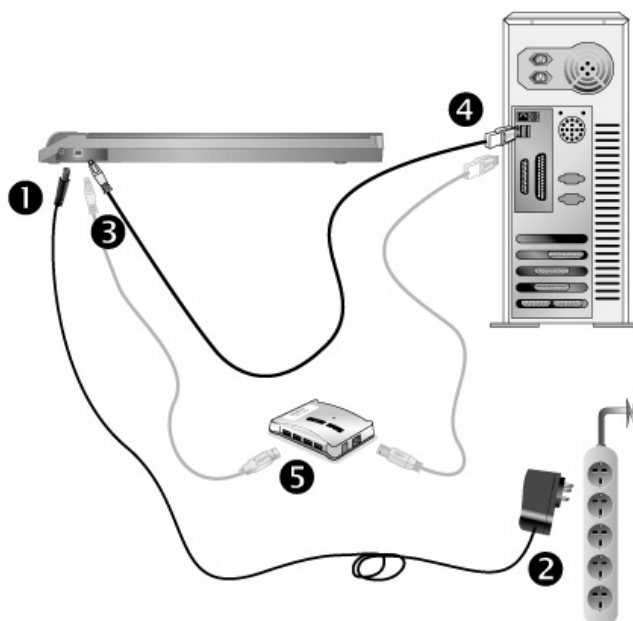


Attention

Choose a Proper Site First!

- Always place your scanner on a level, smooth and strong surface before proceeding the scanner setup or any scanning task. Tilted or uneven surface may cause paper-feeding errors, scanner damage or personal injury.
- Avoid using the scanner in a dusty environment. Dust particles and other foreign objects may damage the unit.

Step 1. Connecting the Scanner to Your Computer



Attention

Please make sure the scanner is turned OFF before you plug or unplug the scanner power adapter.

1. Plug the AC adapter into the scanner's power receptor.
2. Plug the other end of the power cable into a standard AC power outlet.
3. Plug the square end of the included USB cable to the USB port at the rear of the scanner.

4. Plug the rectangular end of the USB cable to an available USB port on your computer.
5. If you plan to connect your scanner to a USB hub⁴, make sure that the hub is connected to the USB port in your computer. Next, connect the scanner to the USB hub.

Step 2. Installing the Software



Attention

The Setup/Application DVD-ROM is not included in all scanner models. You may download the latest version driver from our official website.

For Windows OS:

1. Switch the scanner power on.
2. If the USB components on your computer are functioning correctly, they will automatically detect the scanner causing the **Add New Hardware Wizard** or **Found New Hardware Wizard** to be launched.



Information

If your computer is off when the scanner is connected, the “Add New Hardware Wizard” message will not be displayed until the computer is on and Windows starts.


3. Install the driver:
 - a. Insert the Setup/Application DVD-ROM, included with your scanner, into your DVD-ROM drive. Click on the pop-up notification, then click **Run install.exe** in the pop-up window. If you miss the pop-up notification, please eject and re-insert the Setup/Application DVD-ROM.




- b. Click on the **Yes** button if the **User Account Control** dialog pops up.
4. Follow the on-screen instructions to install all software that your new scanner requires. If the pop-up wizard window appears click **Next**, and click **Install this driver software anyway** in the **Windows Security** window then click **Finish** in the wizard window.

⁴ The USB hub is not included with the scanner. If using a hub, you are recommended to use a hub with its own external power adapter.

5. After the software is installed, close all open applications and click the **Finish** button to restart your computer.

	Save the Setup/Application DVD in case you need to reinstall the driver and software in the future.
Attention	

For macOS:

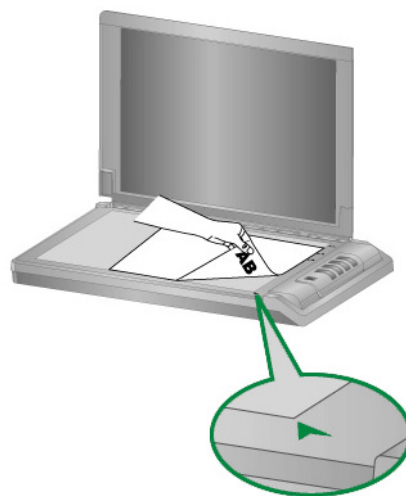
1. Switch the scanner power on.
2. Insert the Setup/Application DVD-ROM, included with your scanner, into your DVD-ROM drive and a [Plustek Scanner] icon  will show on the desktop of your Mac OS X. Double-click on the icon, and a window will pop up displaying the file folder.
3. Double-click on the app file, and the Scanner Installer will start to guide you through the installation. Follow the on-screen guide in the installer window.


Step 3. Testing the Scanner


The following describes how you can check if the scanner is properly functioning with your computer and the scanning software. Before testing your scanner, double check to make sure that all connections are securely fastened.


To test the flatbed scanning:

1. Open the scanner's document cover. Place the document onto the scanner glass headfirst and face-down. Align the top left corner of the document with the arrow on the reference mark.



2. Gently close the document cover.
3. **For Windows OS:** Double-click the icon  on the desktop.

For macOS: Click the icon  in the Dock.

4. Click on  button to scan image.
5. The scanning starts immediately.

INSTALLING ADDITIONAL SOFTWARE

Your scanner is TWAIN compliant and functions with virtually all available TWAIN compatible software. If you purchase additional software to be used with your scanner, please make sure that it conforms to the TWAIN standard.

CHAPTER II. SCANNING

Your scanner needs to be driven by certain type of software program. Since all documents or images (whether text or pictures) that are acquired from the scanner are treated by your computer as images, most scanning will probably be done from an image-editing program where you can view, edit, save and output the scanned images.

What about scanning text documents and editing them in a word processor? This is the role of Optical Character Recognition (OCR) software. OCR software converts the image files that are created from scanning text documents into text files that can be viewed, edited and saved by word processors.

Image Express program is a specialized image scanning program that allows you to conveniently scan and edit photos and documents, and automatically save their electronic files in the designated folder. This program, seamlessly integrating the operation of your scanner with your computer, provides a quick and convenient way to perform various functions.

Please refer to the online help of each program to guide you through any questions you may have while scanning within that program.

This chapter describes three important steps of scanner operations. Read them thoroughly and follow the instructions to ensure correct use and optimal scanner performance.

Step 1. Preparing Documents

Step 2. Placing Documents

Step 3. Scanning Documents

PREPARING DOCUMENTS

Proper document preparation prior to the scan can prevent paper feed errors and damages to the scanner.

- Checking Document Conditions

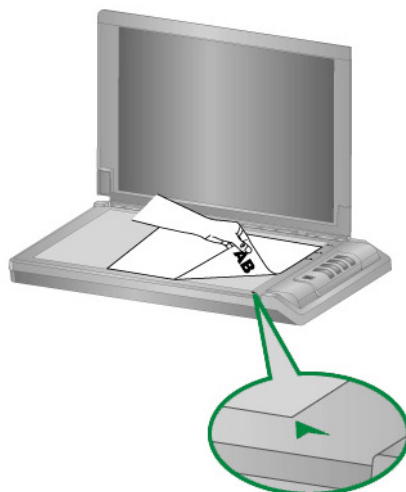
Checking Document Conditions

Make sure the paper sizes of your documents are acceptable by the scanner. Refer to “Appendix A: Specifications” of this guide for more information.

PLACING DOCUMENTS

Using the Flatbed

1. Open the scanner's document cover.
2. Place the document onto the scanner glass headfirst and face-down. Align the top left corner of the document with the arrow on the reference mark.



3. Gently close the document cover.

SCANNING DOCUMENTS

There are 3 different ways to operate the scanner:

1. By acquiring images from the scanner through our TWAIN interface within any TWAIN-compliant application programs.
2. By scanning from Image Express on the screen.
3. By scanning from the scan buttons on the scanner.

The TWAIN interface and Image Express software are automatically installed to your system along with the scanner driver.



Attention

Before you start scanning, check the following:

- The power of both your computer and scanner is turned on.
- Paper is appropriately placed on the scanner flatbed glass.

Scanning via TWAIN Interface

The TWAIN program is a very important piece of software that comes with your scanner. This program acts as an interface between the scanner hardware and the image-editing software you are using to view and edit images. The TWAIN program allows you to adjust a number of settings to define the quality of the scanned image.

The following describes how you may use your TWAIN compatible program to scan via the TWAIN interface. When you get familiar with the scanning, you may alternatively use other TWAIN compatible scanning programs or image-editing applications to do your scanning projects.

Scan within your TWAIN compatible program:

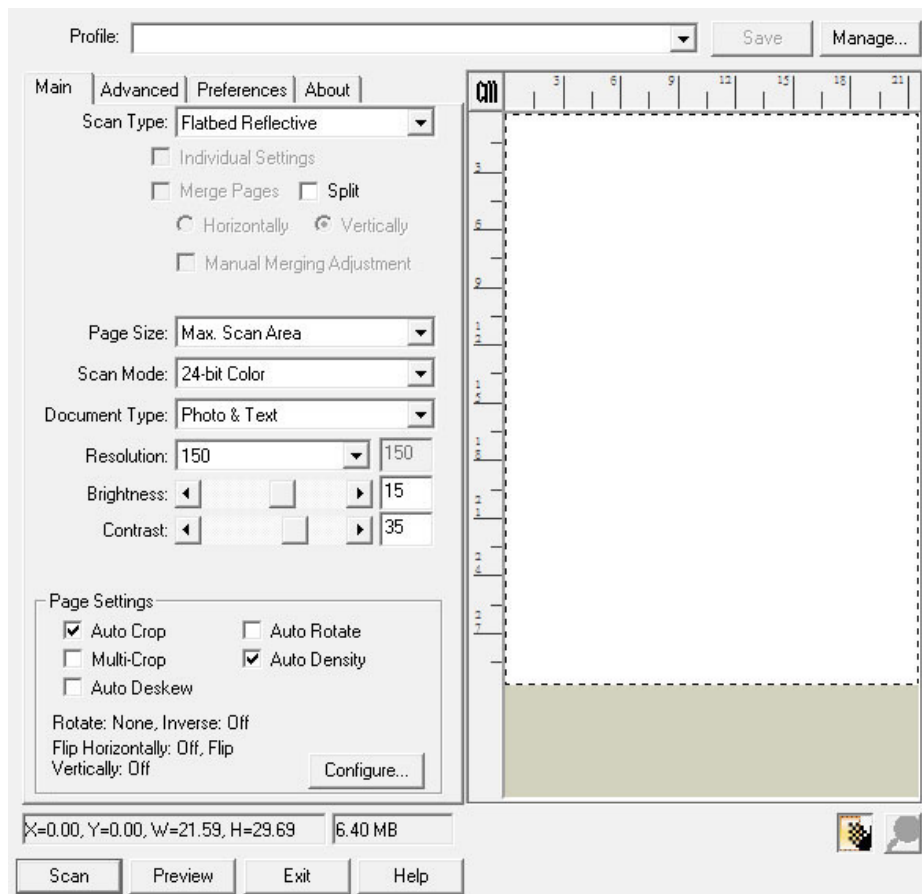
1. Launch your TWAIN compatible program.



Attention

If you have more than one scanner or other imaging devices installed on your computer, you need to set this scanner as the default scanning source before you acquire the TWAIN program. Please refer to your TWAIN compatible program manual for more information about the settings.

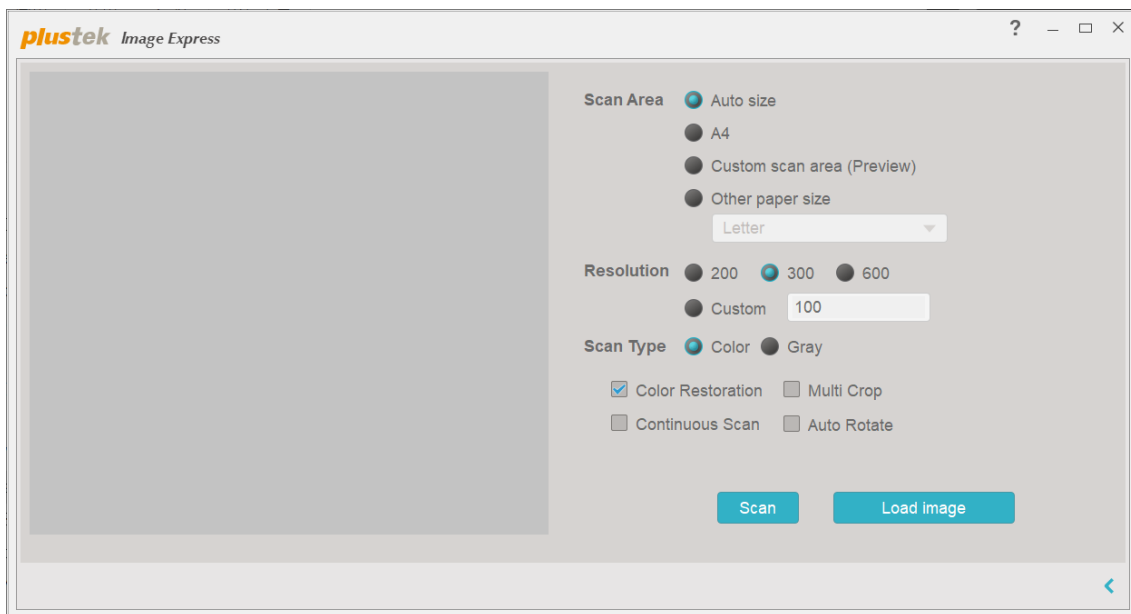
2. Open the TWAIN window within your TWAIN compatible program. Please refer to your TWAIN compatible program manual for detailed information.
3. In the TWAIN window that opens, select **Flatbed Reflective** as the Scan Type.






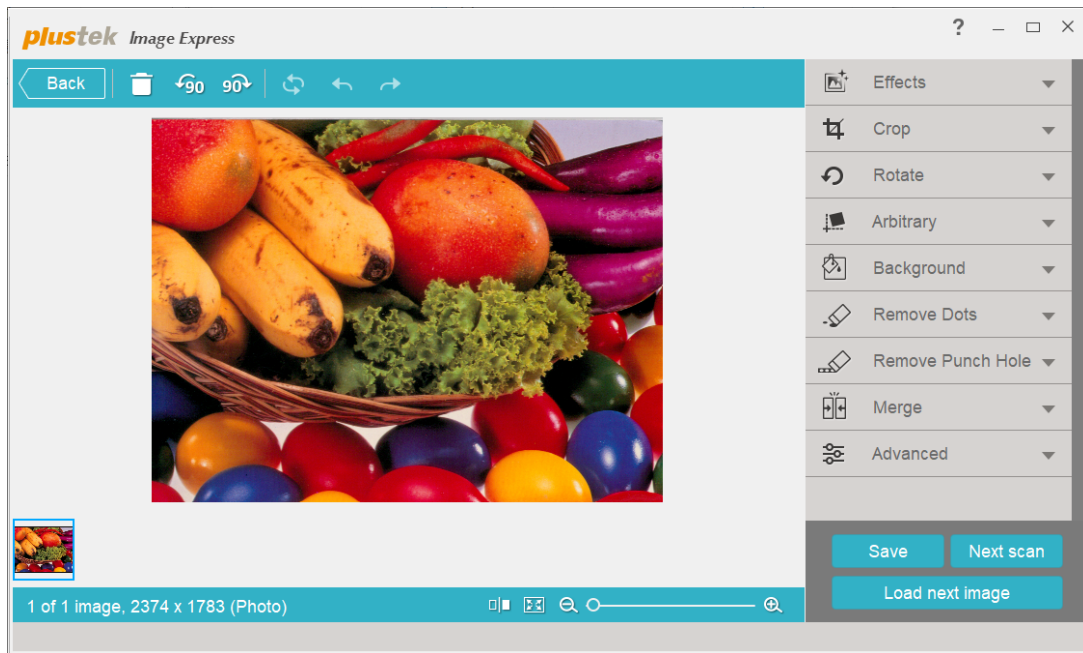
4. Adjust the scanning settings.
5. Click the **Preview** button. The scanned image should appear in the Preview Window. To define the margins and crop out sections of the image you don't want scanned, use the mouse to click and drag the corners or sides of the scan area borders. Adjust the scan settings again if the preview image doesn't satisfy your needs.
6. Click the **Scan** button.
7. When the scan finishes, click the **Exit** button to close the TWAIN window. The scanned images are displayed in your TWAIN compatible program, and you may perform the image editing tasks.

Click the **Help** button within the TWAIN window for more information about the settings.


Scanning via Image Express Interface



1. **For Windows OS:** Double-click the icon  on the desktop.
For macOS: Click the icon  in the Dock.
2. You will be greeted by the Scan screen. If it is necessary, adjust the scan settings.
3. Place the photo / document face down on the scanner glass. Gently close the document cover. Click on  button to scan image.
4. The scanned image is displayed in Edit screen, and you may perform the image editing tasks.

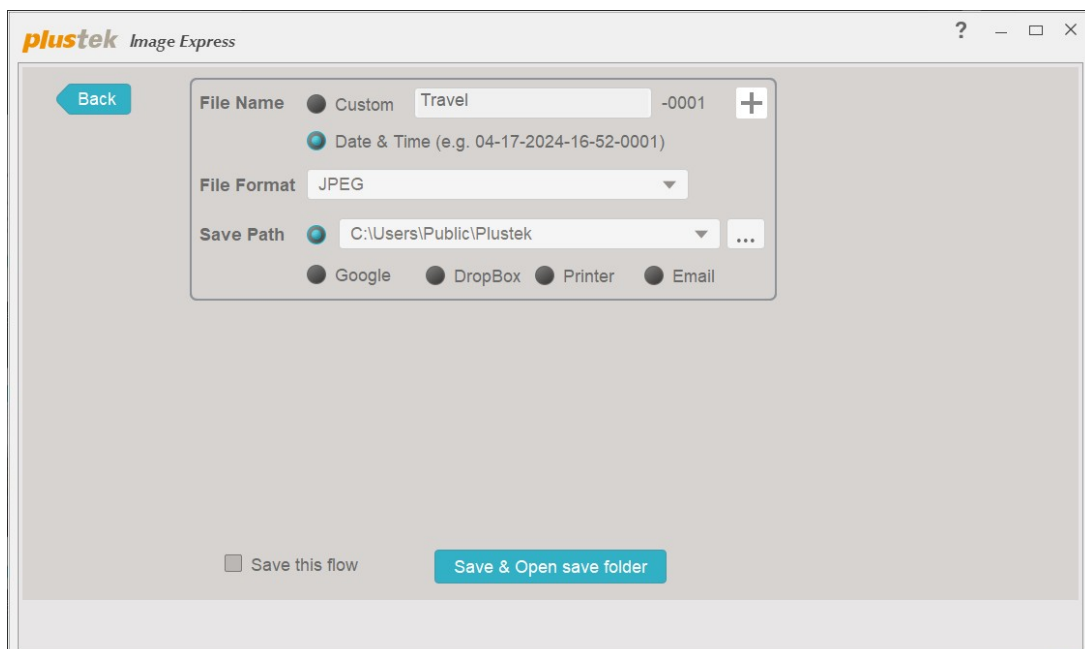


5. Click on the **Save** button brings you to the Save screen, you may adjust the save settings as desired.



Attention

If you scan by the scanner buttons on the panel, **Save Screen** will not popup, and the scan image will be sent to the preconfigured destination.






6. Click on the **Save & Open save folder** button, your images are saved and can be found in the open folder.

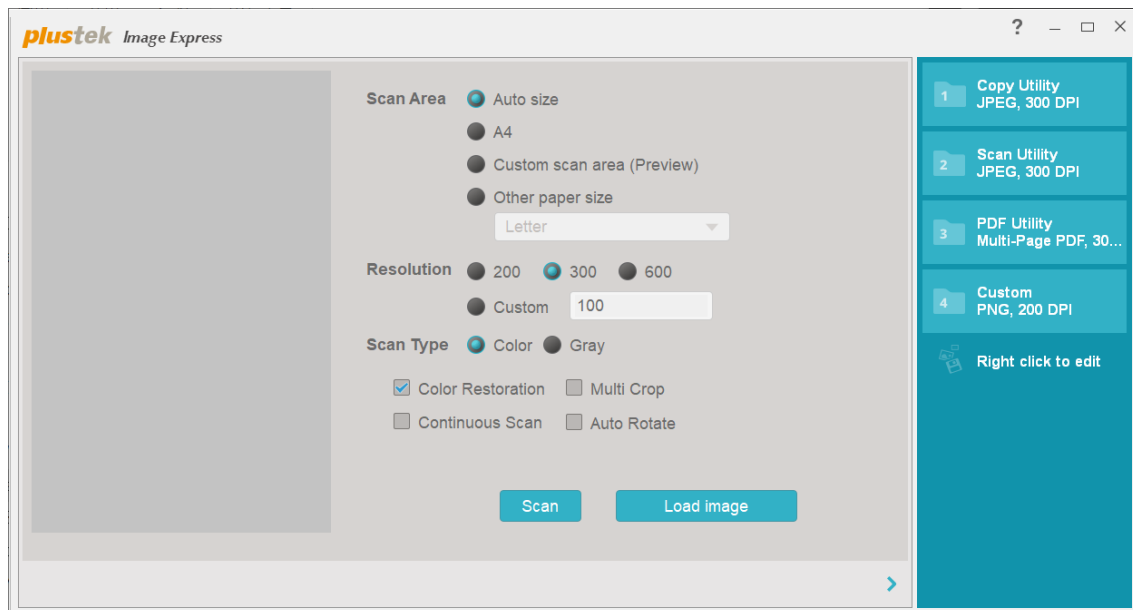
Scanning from the Scanner's Panel


The settings for each button on the scanner's panel are configured through Image Express.

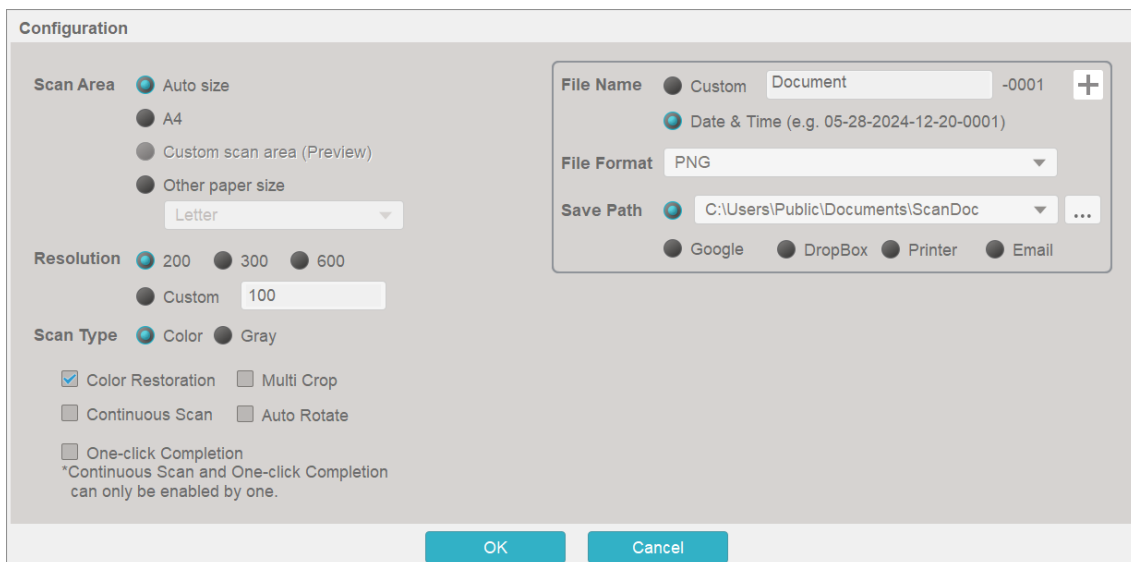
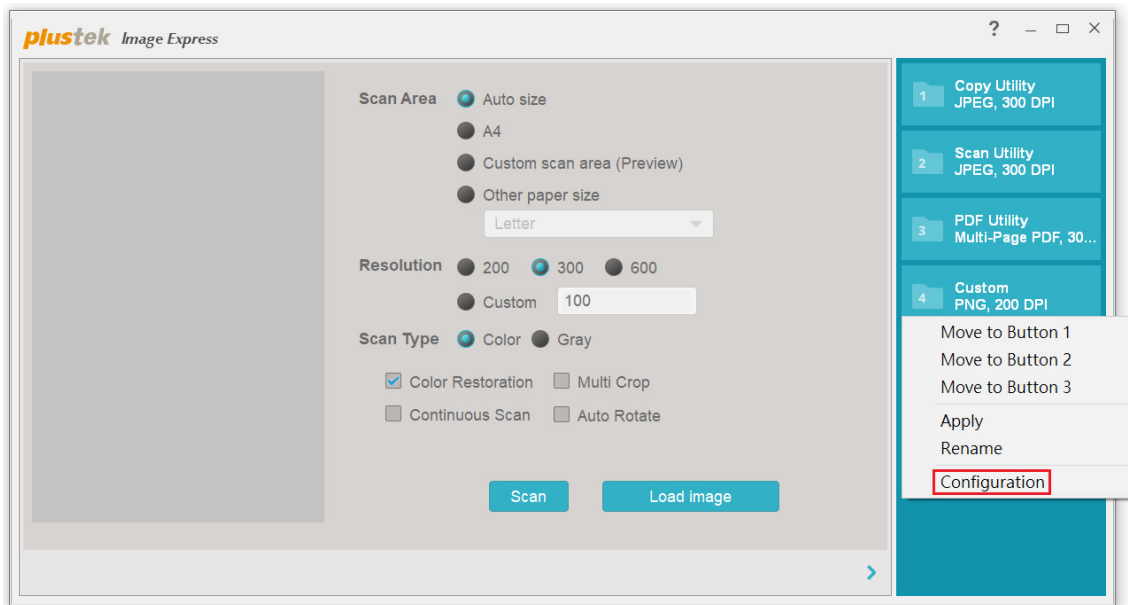
Configure Button Settings

Before performing your first scan via scanner buttons, you are recommended to configure the button settings to your needs and preferences first.

1. **For Windows OS:** Double-click the icon  on the desktop.
For macOS: Click the icon  in the Dock.
2. You will be greeted by the Scan screen. Click the  button on the bottom-right corner to display the button utility. Each icon corresponds to a button on your scanner's panel.



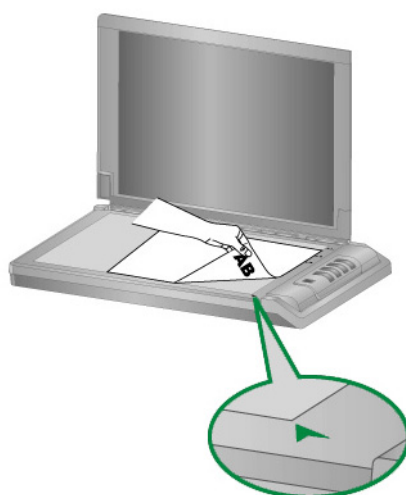
3. Right-click on the desired button and select **Configuration** to adjust settings. Click the  button in the Toolbar, and then choose **Help** in the pop-up menu for more information about the settings.



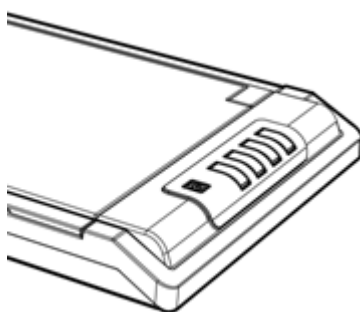
Scan from the Buttons

Scanning documents or images from this scanner is very easy. Follow the two steps described below:

1. Place the document or images onto the scanner. (Refer to “Chapter II. Scanning” of this guide for more information in placing paper on the flatbed glass properly.)



2. Press the button from the scanner's panel.



3. The scanner starts to scan immediately.

CHAPTER III. CARE AND MAINTENANCE

Your scanner is designed to be maintenance-free. However, constant care and maintenance can keep your scanner working smoothly.

CLEANING THE SCANNER

Paper powder, dust, ink and toner from paper being scanned may make the scanner glass dirty, which leads to poor image quality or document-feeding errors. How often to clean your scanner depends on the type of paper and number of pages being scanned.

Perform the following procedures to clean the scanner surface and scanner glass. Gently wipe locations described herein. Do not rub too hard.



Warning

- Before cleaning the scanner, turn off the scanner and disconnect the scanner's power cable and USB cable, and then wait a few minutes for the glass to cool to ambient temperature.
- Wash your hands with soap and water after cleaning the scanner.

Cleaning Materials

Have the following cleaning materials ready to clean the scanner:

- **soft, dry, lint-free cloth (or a cotton swab)**
- **non-abrasive cleaner**—Isopropyl alcohol (95%). DO NOT use water.



Attention

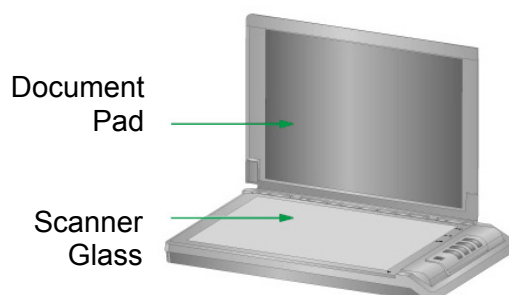
Alternatively you can use glass cleaner or neutral detergent for windows cleaning to clean the scanner glass.

Use of other cleaning materials could damage your scanner.

Cleaning the Flatbed

1. Open the document cover.
2. Gently wipe the following areas with the cloth dampened with the cleaner.

Clean Document Pad & Scanner Glass:



3. Wait for cleaned areas to dry completely.
4. Gently close the document cover.

CALIBRATING THE SCANNER


Calibrate the scanner if colors appear in areas that should be white, or colors of the scanned image and the original vary a lot. This allows you to adjust and compensate for variations that can occur in the optical component over time by its nature.

The following describes how to calibrate the scanner:

For Windows OS:

1. Click **Start > All Programs > Your scanner model name > Calibration Wizard**. (For Windows 8.1 users: Point your mouse cursor to the upper or lower right corner of your screen to open the **Charm** bar. Click on the **Start** charm, then click on the downwards arrow button in the lower left corner of the screen. The **Apps** screen will be shown. Move your cursor to the right edge of the screen to scroll right until you find **Your scanner model name**, and then click on **Calibration Wizard**.)
2. Click **Next** from the Calibration Wizard that pops up.
3. Click **Calibrate Now....**
4. After the calibration is complete, click **OK** and then click **Finish**.

For macOS:

1. Click the  button in the Toolbar, and then choose **Calibration** in the pop-up menu that opens.
2. Follow the on-screen instructions to complete the scanner calibration.

ALIGNING THE SCANNER

In most cases, the scanner doesn't need to be aligned but there are instances when the alignment might be required. You need to align the scanner only if parts of the scanned document are missing from any of its edges. For example, the heading of a document might be missing from the top edge after the document has been scanned.


Alignment for Flatbed Scan:

1. Place the document onto the scanner glass headfirst and face-down. Align the top left corner of the document with the arrow on the reference mark.

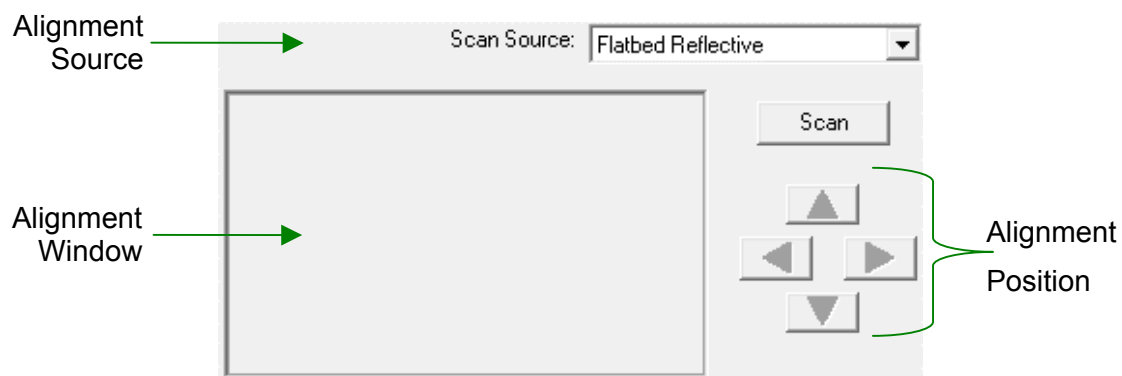
2. **For Windows OS:**

From the Windows **START** menu, point to **All Programs > Your Scanner Model Name**, and then click **Scanner Utility**. (For Windows 8.1 users: Point your mouse cursor to the upper or lower right corner of your screen to open the **Charm** bar. Click on the **Start** charm, then click on the downwards arrow button in the lower left corner of the screen. The **Apps** screen will be shown. Move your cursor to the right edge of the screen to scroll right until you find **Your Scanner Model Name**, and then click on **Scanner Utility**.)

For macOS:

Click the  button in the Toolbar, and then choose **Scanner Utility** in the pop-up menu that opens.

3. The Scanner Utility window opens. Find the **Initial Scanning Position Alignment** section and select **Flatbed Reflective** as the source.



4. Click the **Scan** button. Part of the document image will be displayed in the Alignment Window.
5. Click the **Alignment Position** buttons (Up, Down, Left, Right) until the top left corner of the scanned document aligns with the top left corner of the Alignment Window.
6. When the alignment completes, click on **OK** button to save settings and exit.


STANDBY MODE

To save power consumption, the scanner will enter the standby mode after it is idle for a while. You may define an idle time for the scanner to automatically enter the standby mode.

1. For Windows OS:

From the Windows **START** menu, point to **All Programs > Your Scanner Model Name**, and then click **Scanner Utility**. (For Windows 8.1 users: Point your mouse cursor to the upper or lower right corner of your screen to open the **Charm** bar. Click on the **Start** charm, then click on the downwards arrow button in the lower left corner of the screen. The **Apps** screen will be shown. Move your cursor to the right edge of the screen to scroll right until you find **Your Scanner Model Name**, and then click on **Scanner Utility**.)

For macOS:

Click the  button in the Toolbar, and then choose **Scanner Utility** in the pop-up menu that opens.

2. In the **Standby Mode** section of the Scanner Utility window that opens, click the button of your option. To automatically enter the Standby Mode (**Sleep**), click the button before **Sleep** and then click the up or down arrows to set a default time for the scanner to automatically enter the Standby Mode.



Information

You may define an idle time for the scanner to automatically enter the standby mode. You may press any scanner button to wake up the scanner from power saving.

3. Click on **OK** button to save settings and exit.



Warning

- To completely shut down the scanner, press the power switch of the scanner.
- If the scanner will not be used for a long period of time, shut down the scanner and then disconnect the power cable from the power outlet.

Alternatively you may click **Default** to restore the default settings. You may press any scanner button to wake up the scanner from power saving.

APPENDIX A: SPECIFICATIONS⁵

Image Sensor	CIS
Light Source	LED
Optical Resolution	1200 dpi
Hardware Resolution	1200 x 1200 dpi
Scan Modes	Color: 48-bit input, 24-bit output Grayscale: 16-bit input, 8-bit output B/W: 1-bit
Scanning Speed	3 sec (Color Mode, 300 dpi, A4)
Scanning Area (W x L)	Max : 216 x 297 mm (8.5" x 11.69")
Action Button	Copy, Scan, PDF, Custom
Power Supply	AC Power: 24V / 0.75A
Interface	USB 2.0
Net Weight	1.8 kg (3.9 lbs)
Dimensions (W x D x H)	415 x 265 x 37 mm (16.3" x 10.4" x 1.4")
Protocol	TWAIN Compliant

⁵ Hardware specifications may change at any time without prior notice.

APPENDIX B: CUSTOMER SERVICE AND WARRANTY

Visit our website www.plustek.com for more customer service information. To avoid delays, please have the following information available:

- Scanner name and model number
- Scanner serial number (located at the bottom of the scanner)
- Scanner DVD version and part number
- A detailed description of the problem
- Your computer manufacturer and its model number
- The speed of your CPU
- Your current operating system and BIOS (optional)
- Name of software package(s), version or release number and manufacturer of the software
- Other USB devices installed

SERVICE & SUPPORT INFORMATION (FOR EU COUNTRY ONLY)

Where appropriate, the period of availability of spare parts and the possibilities of upgrading products information. Please ask local distributors and suppliers for spare parts information and product upgrade information.

Information requested by relevant Implementing Measure. Please ask local distributors and suppliers for the related information of Implementing Measure test report.

Do not dispose anything of products before you ask local distributors and suppliers to get correct information for decreases of environmental impact with right methods and procedures.

If you want to disposals the product and/or an accessory, please ask local distributors and suppliers to get the contact information of nearest disposal manufactures.

If you have any maintenance inquiry, please ask local distributors and suppliers to get the contact information of nearest maintenance center in order to extend the product usage life time.

If you want to maintain and clearance the product, please ask local distributors and suppliers to get the right information of nearest stores.

STATEMENT OF LIMITED WARRANTY

This Statement of Limited Warranty applies only to the options you originally purchase for your use, and not for resale, from an authorized reseller.

The manufacturer warranty includes all parts and labor, and is not valid without the receipt of original purchase. To obtain warranty service, you may contact the authorized dealer or distributor, or visit our website to check out the available service information, or send a request via E-mail for further help.

If you transfer this product to another user, warranty service is available to that user for the remainder of the warranty period. You should give your proof of purchase and this statement to that user.

We warrant that this machine will be in good working order and will conform to its functional descriptions in the documentation provided. Upon provision of proof of purchase, replacement parts assume the remaining warranty of the parts they replace.

Before presenting this product for warranty service, you must remove all programs, data and removable storage media. Products returned without guides and software will be replaced without guides and software.

This Limited Warranty service does not provide for carry-in exchange when the problem results from accident, disaster, vandalism, misuse, abuse, unsuitable environment, program modification, another machine or non-vendor modification for this product.

If this product is an optional feature, this Limited Warranty applies only when the feature is used in a machine for which it was designed.

If you have any questions about your Limited Warranty, contact the approved retailer from whom you bought the product or the manufacturer.

THIS LIMITED WARRANTY REPLACES ALL OTHER WARRANTIES, EXPRESS OR IMPLIED, INCLUDING, BUT NOT LIMITED TO, THE IMPLIED WARRANTIES OF MERCHANTABILITY AND FITNESS FOR A PARTICULAR PURPOSE. HOWEVER, SOME LAWS DO NOT ALLOW THE EXCLUSION OF IMPLIED WARRANTIES. IF THESE LAWS APPLY, THEN ALL EXPRESS AND IMPLIED WARRANTIES ARE LIMITED IN DURATION TO THE WARRANTY PERIOD. NO OTHER WARRANTIES APPLY AFTER THAT PERIOD.

Some jurisdictions do not allow limitations on how long an implied warranty lasts, so the above limitation may not apply.

Under no circumstances are we liable for any of the following:

1. Third party claims against you for losses or damages.
2. Loss of, or damage to, your records or data; or
3. Economic consequential damages (including lost profits or savings) or incidental damages, even if we are informed of their possibility.

Some jurisdictions do not allow the exclusion or limitations of incidental or consequential damages, so the above limitation or exclusion may not apply to you.

This Limited Warranty gives you specific legal rights, and you may also have other rights that vary from jurisdiction to jurisdiction.

FCC RADIO FREQUENCY STATEMENT

This equipment has been tested and found to comply with the limits for a Class B digital device, pursuant to part 15 of the FCC rules. These limits are designed to provide reasonable protection against harmful interference in a residential installation.

This equipment generates, uses and can radiate radio frequency energy and, if not installed and used in accordance with the instructions, may cause harmful interference to radio communications. However, there is no guarantee that interference will not occur in a particular television reception (which can be determined by turning the equipment off and on), the user is encouraged to try to correct the interference by one or more of the following measures:

- Reorient or relocate the receiving antenna.
- Increase the separation between the equipment and receiver.
- Connect the equipment to an outlet on a circuit different from that which the receiver is connected.
- Shielded interconnect cables and shielded power cord which are supplied with this equipment must be employed with this equipment to ensure compliance with the pertinent RF emission limits governing this device.
- Consult the dealer or an experienced radio/TV technician for help if the conditions persist.
- Changes or modifications not expressly approved by the manufacturer or authorized service center could void the user's authority to operate this equipment.

This device complies with Part 15 of the FCC Rules. Operation is subject to the following two conditions: (1) this device may not cause harmful interference, and (2) this device must accept any interference received, including interference that may cause undesired operation.